

Thursday 1/24

NAME

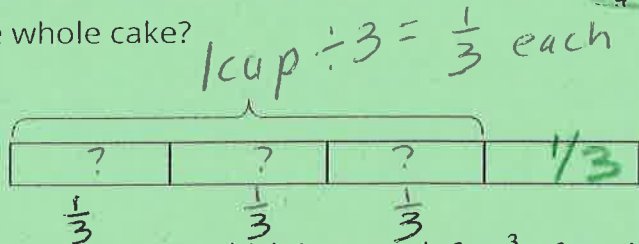
DATE

PERIOD

# Unit 4, Lesson 8: How Much in Each Group? (Part 1)

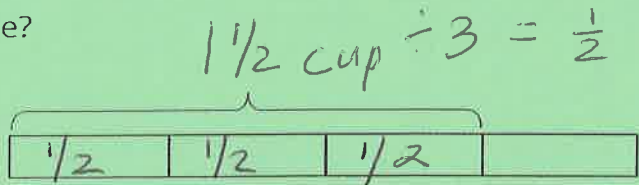
1. For each scenario, use the given tape diagram to help you answer the question. Mark up and label the diagrams as needed.

a. Mai has picked 1 cup of strawberries for a cake, which is enough for  $\frac{3}{4}$  of the cake. How many cups does she need for the whole cake?



fraction of cake  
needs another  $\frac{1}{3}$  so  $1\frac{1}{3}$

b. Priya has picked  $1\frac{1}{2}$  cups of raspberries, which is enough for  $\frac{3}{4}$  of a cake. How many cups does she need for the whole cake?



needs another  $\frac{1}{2}$  so  $2\frac{1}{2}$

2. Tyler painted  $\frac{9}{2}$  square yards of wall area with 3 gallons of paint. How many gallons of paint does it take to paint each square yard of wall?

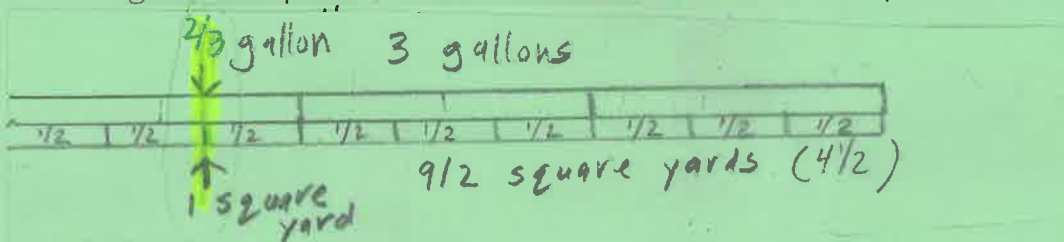
a. Write multiplication and division equations to represent the situation.

$x \rightarrow \frac{9}{2} \times ? = 3$

$3 \div \frac{9}{2} = ?$

b. Draw a diagram to represent the situation and to answer the question.

Drew carefully



$4\frac{1}{2}$   
 $\frac{9}{2} = ?$   
 $\frac{2}{3}$

3. After walking  $\frac{1}{4}$  mile from home, Han is  $\frac{1}{3}$  of his way to school. What is the distance between his home and school?

see next page 😊

a. Write multiplication and division equations to represent this situation.

$\frac{1}{3} \times ? = \frac{1}{4}$

$\frac{1}{4} \times 3$

$\frac{1}{4} \div \frac{1}{3} =$

b. Use the given diagram to help you answer the question. Mark up and label it as needed.

next page

Thursday 1/24

NAME

DATE

PERIOD



Total  $\frac{3}{4}$

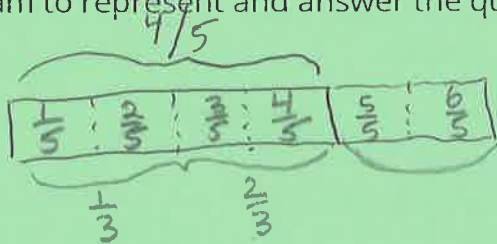
1/2

4. Here is a division equation:  $\frac{4}{5} \div \frac{2}{3} = ?$

a. Write a multiplication equation that corresponds to the division equation.

$\frac{2}{3} \times ? = \frac{4}{5}$

b. Draw a diagram to represent and answer the question.



① Think  $\frac{2}{3}$  of what is  $\frac{4}{5}$   
 ② Need "another"  $\frac{1}{3}$  so answer is  $\frac{6}{5}$

(from Unit 4, Lesson 7)

5. A set of books that are each 1.5 inches wide are being organized on a bookshelf that is 36 inches wide. How many books can fit on the shelf?

a. Write a multiplication equation and a division equation to represent this question.

$1.5 \times x = 36 \text{ inches}$

$36 \div 1.5 = 24$  ✓

$36 \div \frac{3}{2} =$

b. Find the answer. Draw a diagram, if needed.

c. Use the multiplication equation to check your answer.

$1.5 \times 24 = 36$  😊

(from Unit 4, Lesson 3)

6. a. Without calculating, order the expressions based on their values, from smallest to largest.

$56 \div 8$

$56 \div 8,000,000$

$56 \div 0.000008$

middle

smallest

largest

dividing by a larger number results in a smaller quotient.

1/3

1/3

1/4

6